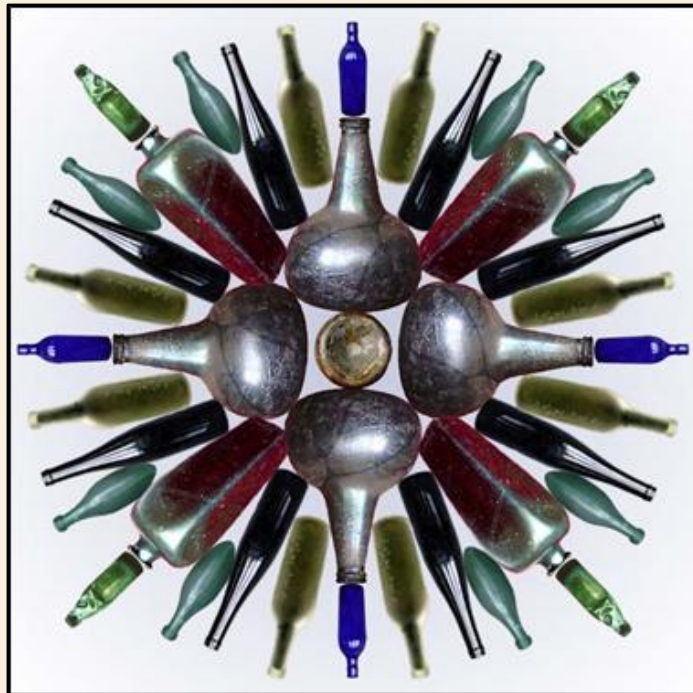


BOTTLES

Picture Gallery - 19th century beers

Malik Fernando

2019
Colombo



Contents - 19th century beer bottles

Introduction	page 3
Black glass beers	pages 4 to 10
Green glass beers	page 11
Embossed green glass beer	page 12
Green glass with swing stopper	page 13
Bibliography	page 14

Beer bottles

Old beer bottles are of two types. The oldest are made in a glass that is dark brown by transmitted light (when held up to the light) but otherwise black in colour. They are therefore commonly called black glass bottles and come in cylindrical form with a variety of lip finishes. The more recent versions are in light or dark green glass, some with embossing.

The earliest beer bottles resembled wine bottles. Secondary fermentation occurring in bottled beverages was discovered in 1600 by Dr. Alexander Niwell. Bottled beer is such a beverage that undergoes secondary fermentation, resulting in the production of the gas that gives the characteristic foam head when poured. The production of gas gives rise to an increase in internal pressure within the bottle necessitating a tight-fitting closure. Developments in the type of closure led to many innovations aimed at improving on cork stoppers – such as spring closures and internal screw stoppers

The invention of the internal screw stopper in 1872 by Henry Barrett solved the problem of bottling beer. Early bottles made for internal screw stoppers had “blob tops”. By the early 20th century the tops were not excessively thick to take the internal screw stopper. No bottles of this type have been found in Sri Lanka. Swing stoppers were invented in 1875 and the crown cork was patented in 1892 by an American, William Painter. The development of the patent crown cork closure—that ensured a perfect gas-tight seal—enabled quantity bottling of ‘fizzy’ drinks including beers, and paved the way to the development of the automatic bottle making machine. This effectively ended the supply of hand-made bottles that are of interest to collectors.

The collection described has in it a bottle made for a swing stopper (without the stopper). There is also a bottle with a hand applied crown cork finish. Many of the bottles are in black glass, of various dimensions, with applied lips of varying profile and varied kick-up profile (Figures 1 & 2 below). A number of the green-glass bottles are embossed.

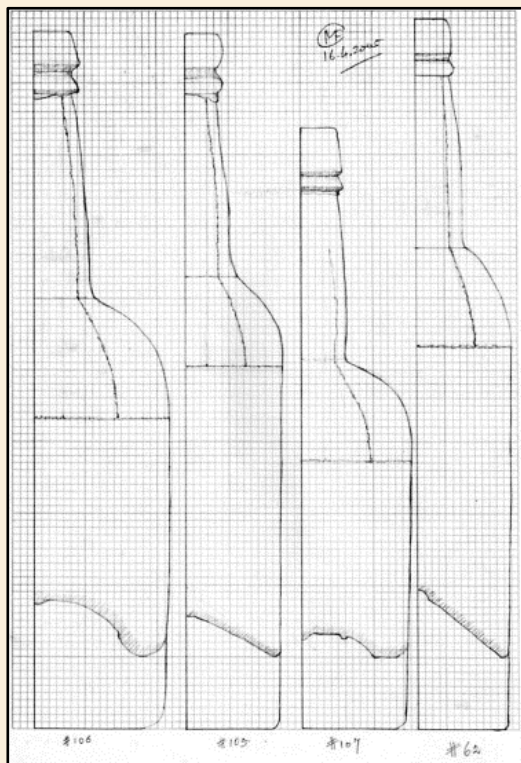


Figure 1 (left): Outline drawings of four black glass beers (#106, #105, #107 & #062 from left to right) showing shapes, lip finishes and base profiles. All drawn to the same scale.

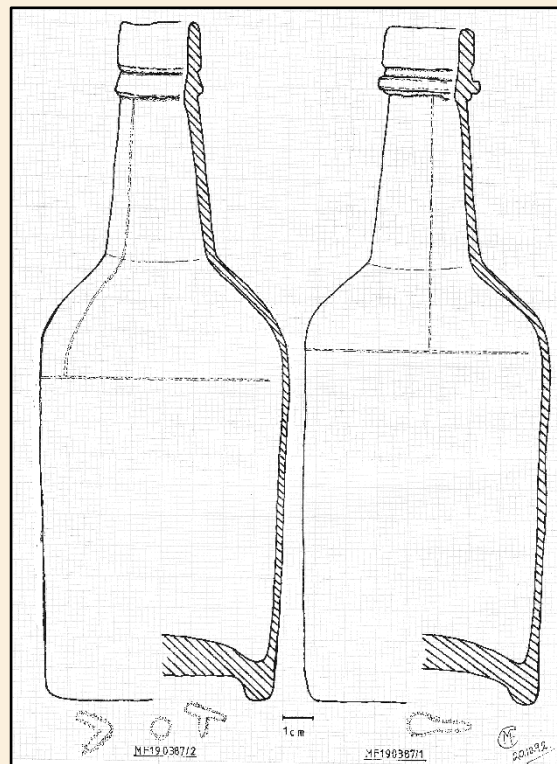


Figure 2 (right): Outline drawings of two green glass beers (#48) showing shapes, lip finishes and base profiles drawn to the same scale.

MOULD BLOWN BEER BOTTLES

Black glassbeer 3-part mould with applied lip

Catalogue #062

European, 19th century



Bottle height 25.5 cm, maximum body diameter 6.5 cm.



A horizontal mould line can be seen just below the shoulders, and another mould line going up the shoulder and neck. A similar line lies on the opposite side of the neck.

Black glass, bubbles present. Slim, graceful, full-height 3-part mould blown with applied lip and deep kick-up. Body cylindrical, shoulders sloping, neck bulged, string rim rounded, lip flattened side. Heel rounded with narrow standing base; basal profile conical.

Purchased in Galle, 14.1.1991.



Underside of bottle showing kick-up.

MOULD BLOWN BEER BOTTLES

Black glassbeer 3-part mould with applied lip

Catalogue #105

European, 19th century

Black glass, slim. Full height 3-part mould with applied lip. Similar style to #62. Body cylindrical, shoulders rounded, neck bulged, narrower above than below, finish rather crude: string rim rounded, lip rounded side. Heel round, base profile parabolic with narrow standing base. Purchased in Galle, 13.2.2002.



The horizontal and vertical mould lines can be seen clearly in the image at left. The image above shows a glass 'drip' on to the neck during the application of the lip.



Bottle height 24.6 cm, body diameter 6.85-6.45 cm.

Underside of bottle showing kick-up.

MOULD BLOWN BEER BOTTLES

Black glassbeer, 3-part mouldwith applied lip

Catalogue #106

European, 19th century



Bottle height 24.7 cm, body diameter 9.5-9.2 cm.



Black glass, wide bodied. Full height 3-part mould blown with applied lip. Body cylindrical, shoulders rounded, neck tapering, string rim "V"-shaped, lip flat side, tapering up. Heel round, base profile domed with small mamelon.

Probably older than other beers in the collection. The body is irregular and sagging in places below. The base has some marks that seem to be embossed letters, but which are indecipherable.

Purchased in Galle, 23.1.2000.



Underside of bottle showing kick-up and small mamelon.

MOULD BLOWN BEER BOTTLES

Black glassbeer 3-part mould, post bottom and applied lip
Catalogue #107

European, 19th century



Bottle height 21.3 cm, body diameter 7.8 -7.4 cm.



Black glass squat beer.

Body cylindrical, shoulders rounded, neck slightly bulged, string rim "V"-shaped, lip flat side, tapering up. Heel chamfered, flat standing base with 2-part indentation, the parts separated by a raised rim, central mamelon.

Mould lines indistinct except the circumferential line around the base from a post bottom.

Purchased in Galle, 13.2.2002.



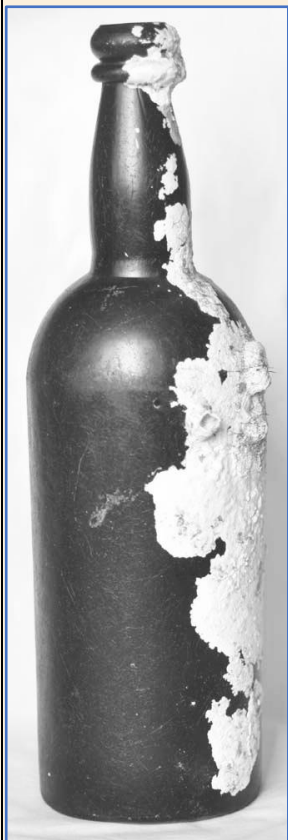
Underside of bottle showing 2-part indentation and central mamelon.

MOULD BLOWN BEER BOTTLES

Black glass beer 3-part mould and applied lip

Catalogue #162

European, 19th century



The bottle is well made and neatly finished, with a few longitudinal creases on the upper neck. Image shows the horizontal body mould seam and the vertical seam over the shoulder that extends up to the lip finish.



Black glass beer, heavily encrusted, partially cleaned. Three-part mould. Body cylindrical, tapered for dip mould, shoulders rounded, neck slightly bulged. Applied lip, string rim round, lip round side. Standing base thin, the kick-up conical with a central finger-tip depression. Capacity: 650 ml.

Purchased in Galle, 11.4.1999.



Bottle height 28.3 cm, body diameter 8.35 -8.0 cm, lip external diameter 3.1 cm.

Underside of bottle showing conical kick-up and central finger-tip depression.

MOULD BLOWN BEER BOTTLES

Black glass beer 3-part mould and applied lip

Catalogue #164

Netherlands, 19th century



Purchased in Unawatuna (Udara Antiques) on 30.3.2018.

Beer, black glass, full height 3-part dip moulded with post bottom. Body cylindrical, shoulders rounded, neck rather short, bulged, applied lip tapered up with straight sides, 'V' profile string rim. Base with central hemispherical dome surrounded by a sloping flat rim with embossed lettering: <DEHAAN & RAVEN HAARLEM> - the 'N' in the first word and the 'W' in the last upside down.

An internet search did not return 'Dehaan' but many references to 'Raven beers' of Haarlem in the Netherlands.

Bottle height 26.8 cm, body diameter 8.0 - 8.3 cm, lip external diameter 2.7 cm.

MOULD BLOWN BEER BOTTLES

Three green-glassbeers with post bottom and applied lip

Catalogue #48

European, 19th century



Three-piece mould blown bottles
(Left-hand bottle)

Dark green glass with small and medium-sized bubbles, whittling on surface. Body cylindrical, shoulders sloped down, neck tapering, string rim "V"-shaped, lip flat side. Base indented.

(Bottle at right)

Dark green glass of a different tint from above, small & medium bubbles & long elliptical ones. Shoulders squarer, otherwise as the other but bottle heavier with a different string rim design - squared profile, lip flat side. Base shallow concave.

Three of four bottles found on-site in an iron shipwreck off Galle, 24 metres depth. 19.3.1987.

Bottle height 22 cm, body diameter 7.9 cm (left and right-hand bottles.) (Beck p. 43; Hedges p. 24.)

MOULD BLOWN BEER BOTTLES

Green-glass embossed beer with post bottom and applied lip
Catalogue #121

England, 19th century

Olive green glass embossed beer, two-part mould with post bottom, applied lip (mould line from base to lip).

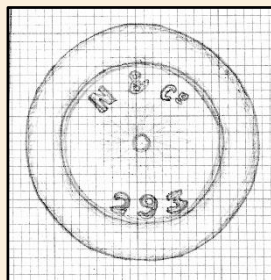
Arch above: 'MACKIE & GLADSTONE'

Inverse arch below: 'LIVERPOOL'

Enclosing an outline shield: in upper field 'M & G', lower field 'L'; above and below shield 'TRADE' / 'MARK'

On the base: 'N & Co' / '293'

Bottle in good condition, lightly scratched, probably an U/W find. Many small & medium bubbles, a few large. Lip with flat sides and flat sided string lip, similar to ID 48 from the 24 m wreck. Capacity 400 ml.



Bottle height 22.2 cm; width 7.8 cm shoulder - 7.3 cm base

Purchased at Unawatuna, Galle,
20.3.2005

MOULD BLOWN BEER BOTTLES

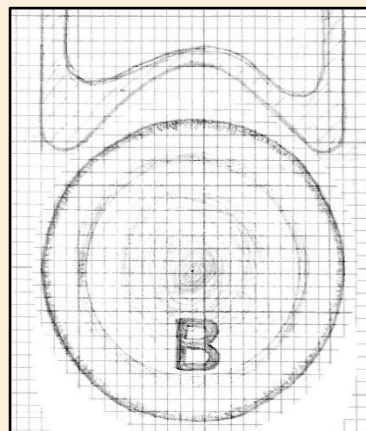
Green-glass embossed beer with post bottom and applied lip for swing stopper.
Catalogue #122

Scotland, 19th century



Slim olive-green embossed beer with swing stopper (stopper missing), 2-part mould (mould line from base to lip), applied lip with thick ridge to take pits for stopper fulcrum. Post bottom with concave base (see drawing). Embossing on two sides: front, in circle, 'A. G. BARR & Co' / 'GLASGOW' enclosing in 3 straight lines: 'TRADE' / 'Andrew G Barr' / 'MARK'; reverse, arched, 'BARR'. On base, 'B'. Capacity 300 ml

Note: The American patented "Lightning stopper" worked on the same principle but did not employ a fulcrum pivoting in pits in the glass: it was bound to the neck with wire (Cecil Munsey "The Illustrated Guide to Collecting Bottles" p. 118).



Bottle height 24.5 cm, body diameter 6.6 - 6.2 cm.

A swing stopper on a machine-made medicine bottle.

BIBLIOGRAPHY

Beck, Doreen, 1973. *The Book of Bottle Collecting*, Hamlyn, London.

Fletcher, Edward, 1972. *Bottle Collecting: finding, collecting and displaying antique bottles*. Blandford Press, Poole.

Hedges, A.A.C., 1975. *Bottles and Bottle Collecting*, Shire Album 6, Shire Publications Ltd, Aylesbury.

Jones, Olive and Sullivan, Catherine, 1985. *The Parks Canada Glass Glossary: for the description of containers, tableware, flat glass and closures*. Studies in Archaeology, Architecture and History, National Historic Parks and Sites Branch, Parks Canada, Environment Canada.

Munsey, Cecil, undated. *The Illustrated Guide to Collecting Bottles*, Hawthorn Books, Inc., New York.

Robinson, Wendy S., 1981. *First Aid for Marine Finds*, Handbooks in Maritime Archaeology No. 2, National Maritime Museum, Trustees of the National Maritime Museum, UK.

Roycroft, Ross and Christine, 1977. *Australian Bottle Price Guide, Number Two*, Author publication.

Acknowledgements:

Books and photocopies donated by Ian Burgess, Jon Carpenter and Vallipuram Murali are acknowledged with grateful thanks.

MF 15.5.2020