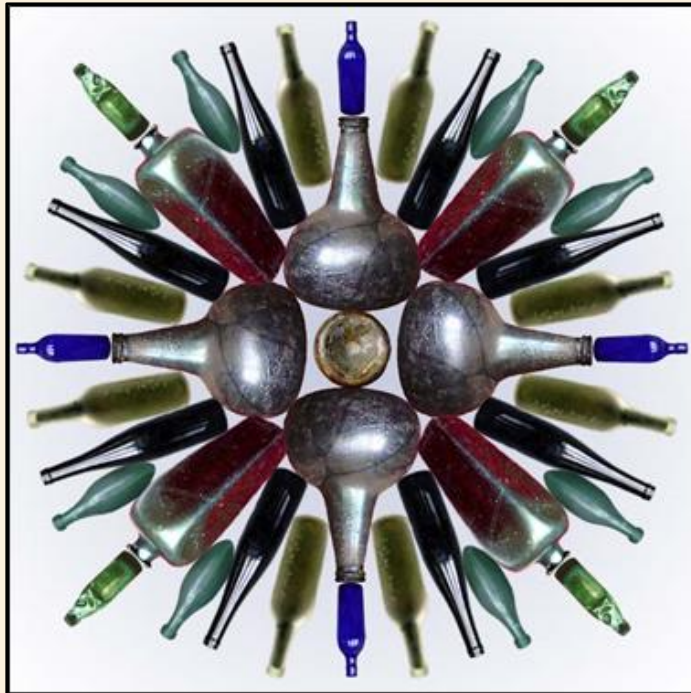


BOTTLES

Picture Gallery - 19th century wines

Malik Fernando

2019
Colombo



Contents - 19th century mould-blown wines: French and German

Introduction	page 3
‘Burgundy’ style	page 4
‘Claret’ style	pages 5 & 6
Champagne	pages 7 to 9
Rhineland flutes	pages 10 to 13
Un-typed ‘wine’ bottles	pages 14 & 15
Bibliography	page 16

Introduction

The squat wine bottles of the 18th century evolved into slim, tall, cylindrical bottles. The shape enabled bottles to be stored on their sides. The narrow, cylindrical shape of the average bottle of today is known in a slightly asymmetrical, free-blown form from as early as 1737. More standard moulded versions appeared in the latter part of the 18th century. Many shapes probably co-existed for years.

By the 19th century wine bottles had developed characteristic shapes in the principal wine growing districts of Europe. The bottles and bases were shaped by the dip moulds into which they were blown the shoulders and necks being drawn by hand and the lips finished with flat collar-like string rims.

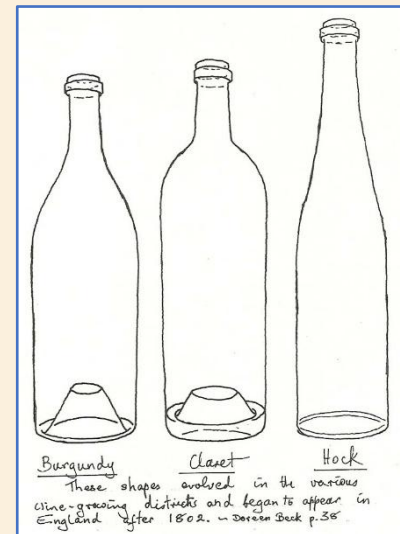
Four distinct bottle shapes are recognised: Burgundy, Claret, Champagne and Hock.

Burgundy Wine Bottles. These bottles have sloping shoulders and were used for wines from the Burgundy district in France.

Claret Bottles. Claret was the name used in England for the wines of the Bordeaux district in France. They were bottled in containers with rounded, rather humped shoulders and somewhat shorter necks than Burgundy bottles.

Champagne Bottles. These bottles are readily recognisable by their long sloping shoulders and extra wide bodies.

Flute Bottles. German wines (called hock in England) were bottled in slim flutes with long sloping shoulders. Rhine wines were traditionally bottle in amber glass and Moselle wines in green.

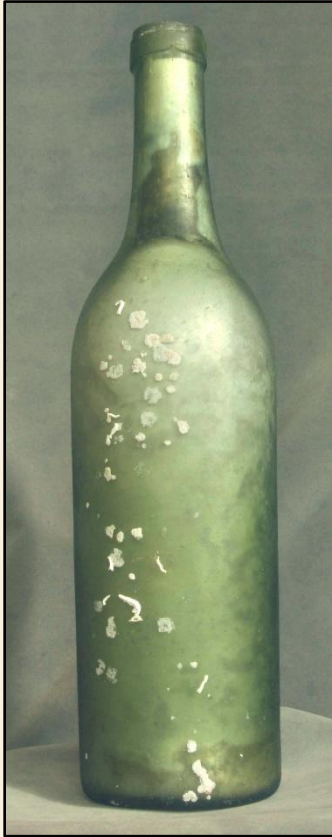


MOULD BLOWN WINES - FRENCH

Wine, Burgundy

Catalogue #073

Presumed France, mid-19th century



Green glass "Burgundy" bottle.

The inside filled with concretions.

Asymmetrical cylindrical body, rounded sloping shoulders, cylindrical neck with stretch marks, sheared lip with collar below, high kick-up with large mamelon.

Surface find by A. L. S. Perera, 20.2.1988.
Galle Harbour, 'Pipe Wreck' site.

Underside of bottle showing kick-up and central pontil scar.

Bottle height 30.5 cm, body diameter 8.1 cm, neck diameter 2.8 cm.

MOULD BLOWN WINES - FRENCH

Wine, Claret

Catalogue #087

Presumed France, mid-19th century

Wine, Bordeaux. 'Claret' type wine bottle.

Intact bottle in good condition.

Dark olive green, stretch marks on neck, elongated bubbles. Cylindrical body, hunched rounded shoulders, cylindrical neck with sheared lip and wide band-like collar. High kick-up with large mamelon. Capacity 725 ml.

Surface find by Gihan Jayatilaka, 1 November, 1992. Galle Harbour, 'Pipe Wreck' site.



Bottle height 30 cm, body diameter 8.1 cm, neck diameter 3 cm average.

MOULD BLOWN WINES - FRENCH

Wine, Claret

Catalogue #144

Presumed France, mid-19th century



Olive-green glass half-size "Claret" bottle.

Bottle in good condition. a slightly chipped lip that is not weathered and shows the sharp edges left by the shearing process. Remnant of concretion inside the lip - but otherwise clean inside and outside. External scratches consistent with a marine find - presumed Galle Harbour. Flat collar, high kick-up with large mamelon.

Date and purchase details not recorded.

Underside of bottle showing kick-up and central pontil scar.

Bottle height 23.3 cm, body diameter 6.6-6.4 cm, neck diameter 2.45 cm.

MOULD BLOWN WINES - FRENCH

Wine, Champagne

Catalogue #108

Presumed France, mid-19th century

A champagne bottle.

Intact bottle in good condition.

Olive-green glass, dip mould, steeply sloping shoulders, cylindrical neck, lip with sloped top, flat collar below. Deep kick-up with very large, somewhat conical mamelon.

Internal silt and concretions and a few external encrustations left intact.

Surface find by Anura Coorey on 5th November, 1994, Galle Harbour, Pipe wreck site.



Bottle height 29.5 cm, body diameter 9.2 cm,
neck diameter 2.85 cm.

MOULD BLOWN WINES - FRENCH

Wine, Champagne

Catalogue #126

Presumed France, mid-19th century



A champagne bottle.

Cylindrical body, rounded asymmetrically sloping shoulders, cylindrical neck, sheared lip with collar below, high kick-up with large mamelon.

Find details and date un-recorded.

Presumed from the Galle Harbour.

Underside of bottle showing kick-up and central mamelon. The white patches are the lower valves of small oysters.

Bottle height 30.2 cm, body diameter 9.5 cm, neck diameter 2.9 cm, lip diameter int. 17.65 cm, ext. 3.06 cm.

MOULD BLOWN WINES - FRENCH

Wine, Champagne

Catalogue #072

Presumed France, mid-19th century

A half-size champagne bottle.

Intact bottle in good condition though pitted and scored on the outside and the inside filled with sediment concretions. An under-sea find as attested by barnacles of various sizes.

Olive-green glass, dip mould, steeply sloping shoulders, cylindrical neck, lip with sloped top, flat collar below. Deep kick-up with large mamelon.

Internal silt and concretions and the external attached barnacles left intact.

Purchased from the 'Lighthouse Man' for Rs 200/- on 9 May, 1992. Presumed from the Galle Harbour.



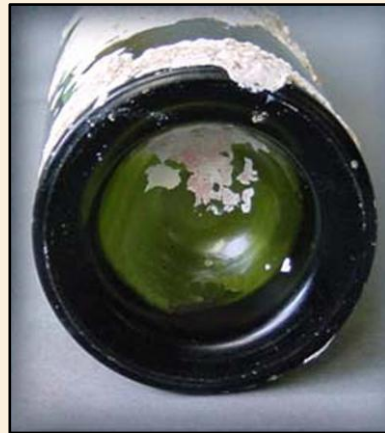
Bottle height 25.7 cm, body diameter 7.4 cm, neck diameter 2.7 cm, lip internal diam. 1.88 cm, external diam. 2.9 cm.

MOULD BLOWN WINES - GERMAN

Wine, Rhineland flute

Catalogue #109

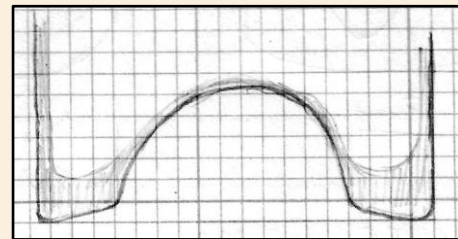
Germany, 19th century



A green glass flute - for Moselle wine.

Olive green with very small bubbles. A faint mould seam circumferentially at top of cylindrical body, long sloping shoulders to neck. Fire polished lip with wide collar string rim. Base domed with chamfered standing rim.

An underwater surface find by Arjan Rajasuriya 4 April, 2003 at Vatiya Parai, off Colombo, 24m depth. Heavily encrusted with coralline algae, calcareous worm tubes and bryozoans. Partially cleaned exposing the whole length along one side.



Drawing of base section

Bottle height 37.5 cm, body diameter 7.5-7.2 cm, neck diameter 2.6 cm.

MOULD BLOWN WINES - GERMAN

Wine, Rhineland flute

Catalogue #128

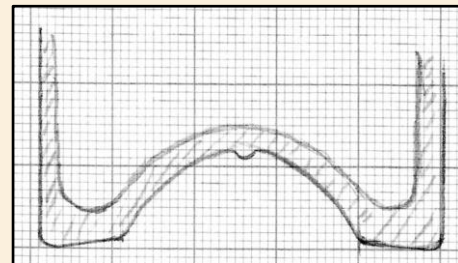
Germany, 19th century



An amber flute - for Rhine wine.
A full-sized Rhineland flute in good condition. Three oyster valves on the base indicating an under-water find. Mould seam not visible, typical flat collar below lip. Base domed with small mamelon and a wide chamfered periphery.

Purchased from an antique dealer at Unawatuna, 1 May, 2005.

The photograph of the underside of the base (at left) shows the three oyster valves.



Drawing of base section

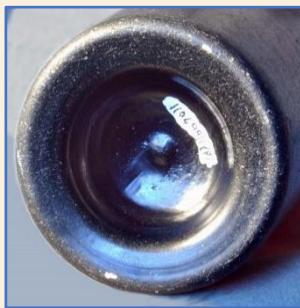
Bottle height 36.5 cm, body diameter 7.8 cm,
neck diameter 3 cm.

MOULD BLOWN WINES - GERMAN

Wine, Rhineland flute, half size

Catalogue #103

Germany, 19th century

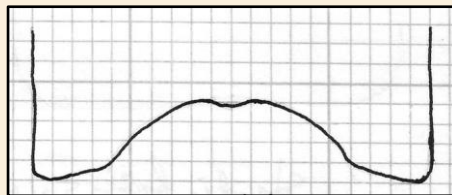


A half-size flute in amber glass.

Intact bottle in good condition. The exterior scored as would be expected of an under-sea find. Very few pin-prick sized air bubbles throughout.

"The German or Rhine wine flute bottle ... traditional for all the wines of Germany ... Rhine wines in amber glass bottles and its Moselles in green." — Cecil Munsey, *Illustrated Guide to Collecting Bottles*.

Purchased from the 'Lighthouse Man', 11 May, 1999. Presumed from the Galle Harbour.



Drawing of base section

Bottle height 28.4 cm, body diameter 6.6 cm, neck diameter 2.9 cm.

MOULD BLOWN WINES - GERMAN

Wine, Rhineland flute

Catalogue #110

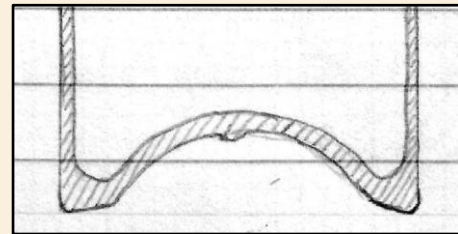
Australia, contemporary?

A "blue glass" flute found in Western Australia.

Intact bottle in good condition. Hardly any surface blemishes or scratches. A faint seam 12 cm up from the base around the bottle. The flat collar appears to be moulded with the neck. This may be 20th century, machine made.



Gifted by Jon Carpenter of the Western Australian Museum (2.12.2003), having been found in a river in Western Australia. He re-called that most of the flutes found there were blue.



Drawing of base section

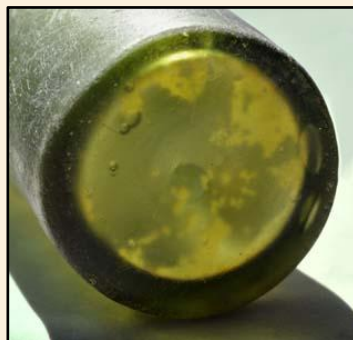
Bottle height 35.2 cm, body diameter 7.6 cm, neck diameter 2.9 cm.

UN-TYPED MOULD BLOWN BOTTLES

Unknown purpose

Catalogue #127

Unknown country of manufacture



A light green glass bottle with large and small bubbles recovered from the sea.

Tall cylindrical body with sagging sides that taper down. Short tapering neck with many stretch marks ending in a short, rounded ring. Lip applied (or possibly laid-on?), flat side, tapering up. The finish much abraded, details lost. No visible seams, presumed dip-mould blown. The base flat with a rounded heel.

Purchased from the 'Lighthouse Man', 13 February, 2002. Presumed from the Galle Harbour. This is one of 4 purchased for Rs. 1000/-

The flat base with no kick-up is curious.

Bottle height 31 cm, body diameter 9-8.8 cm, neck diameter 2.95 cm.

UN-TYPED MOULD BLOWN BOTTLES

Unknown purpose

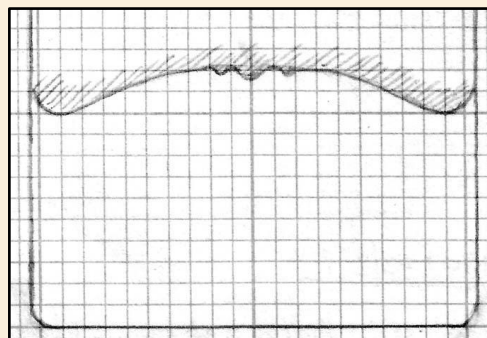
Catalogue #159

Unknown country of manufacture



A surface find in association with a small iron ship-wreck off Negombo at Ulagala, 12 m or so.

Light green glass with tiny bubbles and long elongated ones at the neck. Well made and well proportioned. Body cylindrical, shoulders rounded and sloping, neck cylindrical, blob-top. Dip-mould blown with applied lip. Heel rounded, wide standing rim, base profile a shallow dome with mamelon enclosed by a ring.



Drawing of base section.

Bottle height 29.9 cm, body diameter 8.15-8.05 cm, neck diameter 2.5 cm.

BIBLIOGRAPHY

Beck, Doreen, 1973. *The Book of Bottle Collecting*, Hamlyn, London.

Fletcher, Edward, 1972. *Bottle Collecting: finding, collecting and displaying antique bottles*. Blandford Press, Poole.

Hedges, A.A.C., 1975. *Bottles and Bottle Collecting*, Shire Album 6, Shire Publications Ltd, Aylesbury.

Jones, Olive and Sullivan, Catherine, 1985. *The Parks Canada Glass Glossary: for the description of containers, tableware, flat glass and closures*. Studies in Archaeology, Architecture and History, National Historic Parks and Sites Branch, Parks Canada, Environment Canada.

Munsey, Cecil, undated. *The Illustrated Guide to Collecting Bottles*, Hawthorn Books, Inc., New York.

Robinson, Wendy S., 1981. *First Aid for Marine Finds*, Handbooks in Maritime Archaeology No. 2, National Maritime Museum, Trustees of the National Maritime Museum, UK.

Roycroft, Ross and Christine, 1977. *Australian Bottle Price Guide, Number Two*, Author publication.

Acknowledgements:

Books and photocopies donated by Ian Burgess, Jon Carpenter and Vallipuram Murali are acknowledged with grateful thanks.

MF11.5.2020