

BOTTLES

Picture Gallery - 17th to 19th century wines

Malik Fernando

2019
Colombo



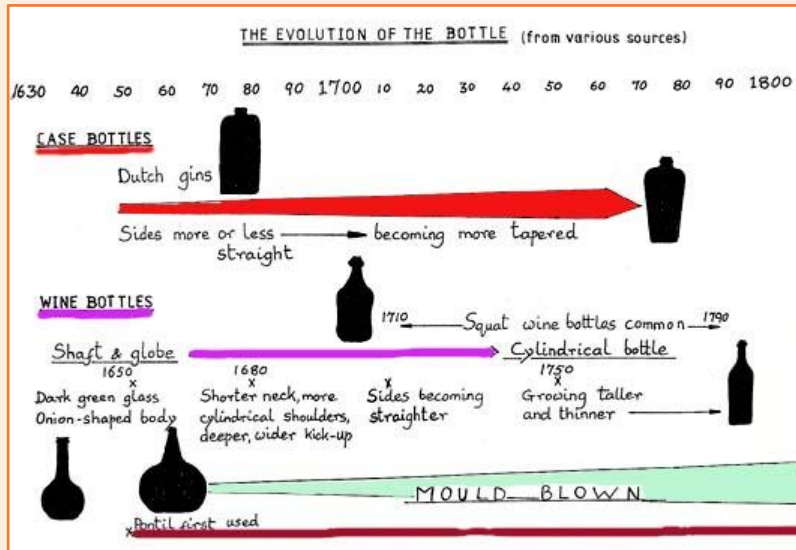
Contents - 17th to 19th century bottles

Introduction	page 3
Free blown wines - Onion bottles	pages 4 to 8
Dip-mould blown wines -squat wines	pages9 to 10
Dip-mould blown case bottles - square gins	pages 11 to 14
Multi-part mould blown case bottles	pages 15 to 19
Plate-moulded case bottles	pages 20 to 21
Schnapps bottles	pages 22 to 23
Bibliography	page 24

Introduction

Ancient bottles used for wines and spirits were at first free blown and subsequently mould blown. The free blown bottles had bulbous bodies and long necks—the shaft and globe bottles of the 17th century and the onion bottles of the 18th. In time, the round bodies became cylindrical with shorter necks—the squat wine bottles of the 18th century. These bottles were formed in dip moulds. All these forms had sheared necks

with a band of hand-applied glass forming a string rim. All forms prior to about 1850 showed a characteristic pontil scar.



Case bottles, also blown in dip moulds, were square in section with very short necks. The sides were near-parallel in the earliest 17th century forms, the later ones had wide shoulders, the body tapering down to a narrow base. The simple dip moulds gave way to multi-part moulds and later plate moulds that produced bottles with embossed lettering on the sides.

The gallery contains images of the various types described above in the Malik Fernando Collection. The earliest piece is only a base fragment thought to be that of a 17th century shaft and globe bottle. The earliest case bottles are also represented by fragments—from the Galle Harbour and the Kelani Ganga. These early fragments, as well as a slightly damaged onion bottle from the harbour bed, formed the nucleus of the Sub-Aqua Club Collection that was later transformed into a personal collection when the interests of the club changed and the collection was enlarged using personal funds.

FREE BLOWN WINES

Shaft & Globe Bottle fragment

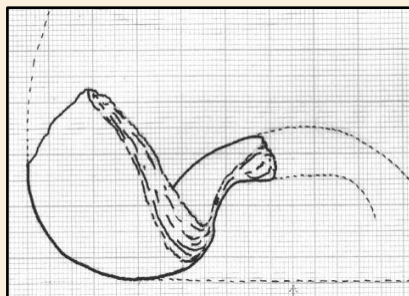
Catalogue #086

European, 17th-18th century

A glass base fragment thought to be a portion of a shaft & globe bottle. Galle Harbour, 1.11.1992.



Upper: Bottle base interior; Lower: exterior; Upper right: elevation from front with kick-up in foreground. Estimated resting point diameter 80 mm; kick-up height 20 mm.



Drawing of fragment oriented to show resting point and kick-up. Dotted lines are projections of body side wall (left) and kick-up (right). Similar projection of fragment in plan view enabled estimation of resting point diameter.

FREE BLOWN WINES

Onion Bottles

Catalogue #019

European, mid-18th century



Bottle height 16.6 cm, maximum body diameter 13.9 cm.

An 18th century onion bottle found in the Galle Harbour on 10th April, 1988. This bottle has been consolidated with resin after dehydrating to prevent further deterioration of the glass. The inside still contains concreted sediment that was difficult to remove. A combination of factors that includes flaking of the glass into layers (lamination) results in the combination of colours seen in the photograph. The original colour of the bottle was green.



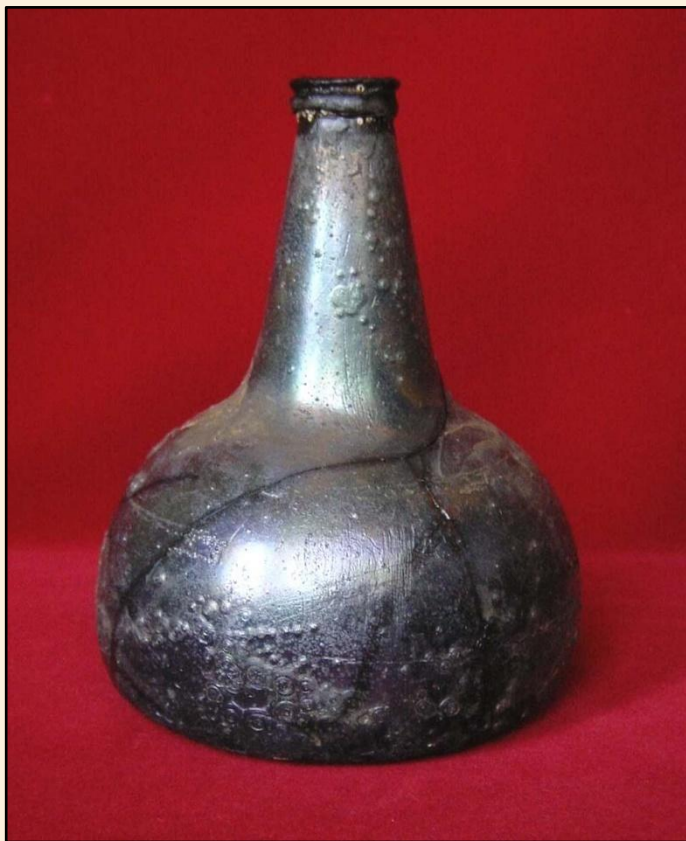
Underside of bottle showing kick-up and central pontil scar.

FREE BLOWN WINES

Onion Bottles

Catalogue #100

European, mid-18th century



Bottle height 17.2 cm, maximum body diameter 13.3 cm.



Underside of bottle and detail of lip showing the string rim.

FREE BLOWN WINES

Onion Bottles

Catalogue #135

European, mid-18th century



Bottle height 16 cm, maximum body diameter 15 cm.



Underside of bottle

FREE BLOWN WINES

Mallet Bottle

Catalogue #101

European, mid-18th century



Bottle height 20 cm, maximum body diameter 14 x 10.7 cm.



Bottle viewed from the front and the side.

DIP MOULD BLOWN SQUAT WINES

Squat Wine Bottles

Catalogue #102

Catalogue #158

European, 18th century



102: A well preserved European squat wine bottle from around the mid-18th century recovered from the Kelani Ganga. The glass is greenish heavily stained with brown. (Base below, upper.)

#158: A late-18th century wooden dip mould blown bottle with a capacity of 750 ml (24 oz), in olive-green glass. It had been in a household collection and is in mint condition. The deep, hemispherical kick-up can be seen. It has a small bare-iron pontil scar that is hardly discernible. The glossy exterior shows whittling, characteristic of wooden moulds. (Base below, lower.)



Height 20 cm, BD 7.8 -7.6 cm, tapering down. Height 23.3 cm, BD 10.1 - 10 cm, tapering down.

DIP MOULD BLOWN SQUAT WINES

Constantia Wine Bottles

Catalogue #125



Height 28.3 cm, BD 9.2 -8.4 cm, tapering down.

Catalogue #160



Height 29.4 cm, BD 8.9 - 8.7 cm, tapering down.

European, late 18th century

Two Constantia wine bottles recovered from the sea-bed. Catalogue number 125 undoubtedly from the Galle harbour, # 160 said to be found by a diver at Weligama. Two neck fragments were previously found in Galle harbour by the author and his colleagues. The type was identified by one of the neck fragments in the Netherlands. Used to bottle a superior wine from the Constantia estate in South Africa, shipped to Europe in wooden casks, there decanted into these characteristic bottles with long necks and short bodies and thereafter shipped to the Dutch colonies. Date of manufacture circa 1780-1790.

(Pers. comm. *Ton van der Horst, Schiepvvaart Museum, Amsterdam*)



Base of #160 showing the pontil scar.

DIP MOULD BLOWN CASE BOTTLES

Dip moulded case bottle fragments: Dutch gins

European, early 18th century

Catalogue #009



Catalogue #026



Early 18th century Dutch gin bottle neck & shoulder fragments. Shoulder width 11 cm.



Catalogue # 010 (left)

The base of an early 18th century Dutch gin bottle from the same site.

Base width 10.5 cm, with a shallow kick-up and pontil scar.

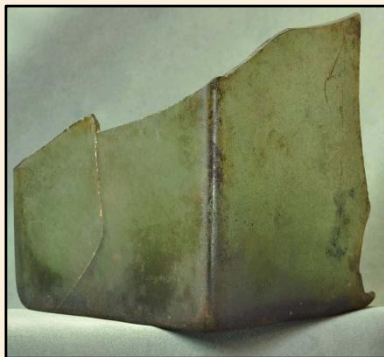
All three pieces were surface finds in the Galle harbour: #026 by Nimal Ratnapala on 21.1.1990 and 009 & 010 by A. L. S. Perera on 16.12.1990. They were heavily corroded and encrusted. They are stored in fresh water to prevent further flaking.

DIP MOULD BLOWN CASE BOTTLES

Dip moulded case bottle fragments: Dutch gins

European, early 18th century

Catalogue #090



A base fragment of an early 18th century Dutch gin bottle; a surface find on the bed of the Kelani ganga (river), at Mulleriyawa, by A. L. S. Perera, on 7.3.1993.

The base width of this fragment is the same as that of #010 on the preceding page.

Base width 10.5 cm, wall thickness 3 mm, green glass with very small bubbles, no corrosion. The shallow kick-up has a pontil scar.

Case bottles are so called as they were made with bodies square in section to fit into wooden cases to facilitate transport. Each bottle contained 2.4 litres. The earliest bottles had near-parallel sides, with the base being only very slightly narrower than the shoulders to facilitate their removal from the square moulds in which they were blown.

Over the years the downward taper increased, as shown by the examples on the following pages.

DIP MOULD BLOWN CASE BOTTLES

Dip moulded case bottle: Dutch gins

European, late 18th to early 19th century

Catalogue #154



Olive -green glass with numerous bubbles ranging from 0.5 to 1.0mm diameter, with a few larger, elongated.

This bottle, in very good condition, was purchased from an antique dealer on 16.4.2012. It was said to have been obtained from its previous owner in Matara.

This case bottle is not as old as the fragmentary bottles on the previous pages. The date of manufacture is placed at circa 1800. The shoulder width is slightly greater and the base slightly less than in the older fragments giving an increased taper. The lip is better made with an applied flange finish, fire polished but asymmetrical and mal-aligned. The sides of the base are arched, the bottle resting on the four corners. The pontil scar is prominent.

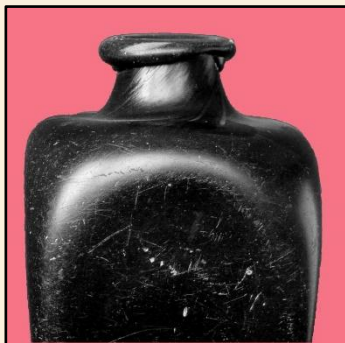
Standing height 28.5cm; shoulder width 11.4 x 11.3cm, base width 9.5cm.

DIP MOULD BLOWN CASE BOTTLES

Dip moulded case bottle: Dutch gin

European, third quarter 19th century

Catalogue #118



A case bottle without a pontil scar. The absence of the pontil scar indicates a date of manufacture after 1850, sagging sides and crudeness suggests a date not much later, so say third quarter.

A black glass bottle purchased on 20.2.2005 in Galle. It has been found in the sea as shown by scratches on the outside together with remnants of barnacles, spirobids and bryozoans. The inside had a thin, flaking layer of opalescence. This is the only black glass case bottle found, all other bottles of this type of glass being beers.

The sides sag, the square base is uneven and the extended hand-drawn neck is finished with an applied, rolled lip. The square basal depression with rounded corners is seen in the photograph.

Standing height 21.8 cm, shoulder width 8.3 cm, base width 5.1 cm.

MULTI-PART MOULD BLOWN CASE BOTTLES

Two-part mould blown case bottles: Dutch gins

European, second half 19th century

Catalogue #112



Height 23 cm, shoulder width 7.6 cm, base width 5.5 cm.

Purchased from an antique dealer in Galle on 23.11.2004.

This case bottle has been blown in a mould consisting of two halves that formed the body, shoulders and neck. The hollowed-out bottom was shaped by an additional piece termed a post bottom that left a square mould line around the base below the rounded lower end of the sides, clearly seen in the image at left, below. There are two mould lines hidden in two diagonally opposite corners of the body, extending over the shoulders and the sides of the neck. The flange-shaped lip has been moulded on, leaving an irregular joint.

The bottle is made of olive-green glass containing bubbles up to 20mm in diameter. It is in good condition and must have been recovered from the sea, probably the Galle harbour, because when purchased it had a marine gastropod snail attached inside (*Ergaea walshi*).

MULTI-PART MOULD BLOWN CASE BOTTLES

Two-part mould blown case bottles: Dutch gins

European, second half 19th century

Catalogue #156



Height 21.5cm, shoulder width 6.4cm, base width 4.4cm.

Purchased from an antique dealer in Kotte on 15.8.2011.

This bottle is similar to catalogue #112 having been blown in a two-part mould that formed the body, shoulders and neck. A post bottom formed the square base with a central square, flat-bottomed depression. The mould seams run down two diagonally opposite edges. The lip is moulded with an upward taper.

There are two panels with arched tops on opposite sides that were probably for paper labels.

This bottle, made of olive-green glass with bubbles ranging in size from 0.5 to 2mm, with a few larger ones, is in very good condition and has never been in the sea or buried. The probable date of manufacture is likely to be nearer the end of the 19th century than #112.

MULTI-PART MOULD BLOWN CASE BOTTLES

Four-part mould blown case bottles: Dutch gins

European, second half 19th century

Catalogue #157



Height 26.7 cm, shoulder width 9.6 x 9.7 cm,
base width 7.2 x 7.3 cm.

Purchased from an antique dealer in Kotte on 15.8.2011.

Made of olive-green glass, with many elliptical bubbles 7 to 25 mm long, this bottle has been formed in a four-part mould with post bottom: the shoulders in two parts, the body in two parts, the neck hand drawn, the lip moulded with straight sides, tapered up. The edges of the body are chamfered, the sides flat with arched tops that hide the mould lines between the shoulder pieces and the body. There are deep swirl marks on the shoulders and neck.

The standing base is square with a flat-bottomed square central depression containing a small central mamelon within a raised circle and six small mamelons along two edges - three on either side.

MOULD BLOWN CASE BOTTLES WITH SEALS

Olive-green sealed gin—A. van Hoboken

The Netherlands, late 19th century

Catalogue #134



Height 27.7 cm,
shoulder 10.2 cm, base 7.5 cm. Seal diameter 4 cm.

Purchased from an antique dealer in Unawatuna on 19.8.2006 for Rs 3,500/-.

The bottle in good condition, from a land site. Surface slightly scratched but mostly smooth and glistening.

Olive-green glass, no mould seams visible, neck short, applied lip, straight sides, tapered up. Body strongly tapered down, base arched, standing on the four corners that are not level.

Seal on shoulder with letters AVH within a raised circle: the absent dot over the 'A' indicates a bottle by A. van Hoboken.

(Australian Bottle Price Guide, Ross & Christine Roycroft (1977) p. 37.)

MOULD BLOWN CASE BOTTLES WITH SEALS

Olive-green sealed gin—V. Hoytema

The Netherlands, late 19th century

Catalogue #117



Height 28 cm, shoulder 10.9 x 10.7 cm, base 7.4 x 7.3 cm.
Seal diameter 4 cm.

Purchased from an antique dealer in Unawatuna on 20.2.2005 for Rs 2,000/-.

A large, graceful, well-made bottle with extended neck and a rolled lip. Mould seams suggest a four-part mould: the body in two parts, the shoulders in two parts, post bottom, the neck hand drawn and the lip applied. Bottom domed, rough, the corners chamfered.

Prominent whittling on the sides, no evidence of immersion in the sea; one edge cracked.

Seal on shoulder with letters AVH within a raised circle with a dot over the 'A' indicating a bottle by V.Hoytema & Co.

(Australian Bottle Price Guide, Ross & Christine Roycroft (1977) p. 37.)

PLATE-MOULDED CASE BOTTLES

Two-part plate mould-blown, with embossed legend and emblem on opposite sides - Blankenheym&Nolet

The Netherlands, fourth quarter 19th to first quarter 20th century

Catalogue #136



From a private collection, donated by Sri Lal Perera.

Olive-green glass, 2-part plate mould, post bottom, very short neck, applied lip, straight sides, tapered up.

The embossed legend reads Blankenheym&Nolet / key emblem on opposite face. Capacity 650ml.

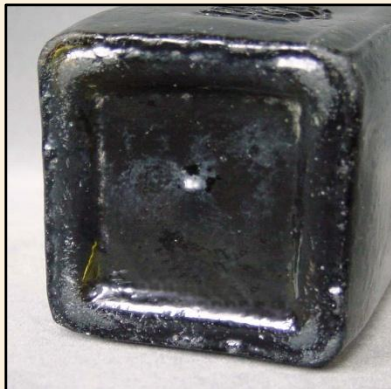
Height 23.8 cm, shoulder width 7.65 cm, base width 6.2 cm.

PLATE-MOULDED CASE BOTTLES

Two-part plate mould-blown, with embossed legend and emblem on opposite sides - Blankenheym&Nolet

The Netherlands, fourth quarter 19th to first quarter 20th century

Catalogue #116



Purchased from an antique shop in Unawatuna on 29.1.2005.

Olive-green glass, 2-part plate mould, post bottom, very short neck, applied lip, straight sides, tapered up. Similar to #136 but half the capacity - 350 ml.

The embossed legend reads Blankenheym&Nolet / key emblem on opposite face.



Details of the lip and the base are shown together with the legend. The square mould seam around the base characteristic of a post-bottom is seen clearly.

Height 18.7 cm, shoulder width 6.5 cm, base width 5.1 cm.

SCHNAPPS BOTTLES

Two-part plate mould-blown, with embossed legend on opposite sides - Schiedam Aromatic Schnapps

The Netherlands, fourth quarter 19th to first quarter 20th century

Catalogue #153



Purchased from an antique shop in Unawatuna on 15.11.2008 for Rs 1700/-.

Schnapps bottles are square in section like gin bottles but parallel-sided, without the downward taper.

Glass olive-green, with a few small bubbles (1 mm) and two larger, oval (6 mm). A crack in one corner at the base. Outside scratched, interior contained muddy sediment suggesting this had been buried.

Corners chamfered, sides parallel, sagging. Mould seams concealed in two diagonally opposite corners and up sides of neck. Post bottom with circumferential seam. Lip applied, tapered up. The base flat with a central hemispherical depression. Embossed legend on two opposite sides.

Height 25 cm, shoulder width 7.2 cm, base width 7.2 cm.

SCHNAPPS BOTTLES

Machine-made Schnapps bottle embossed on three sides -
J. van Felman / SCHNAPPS / SCHIEDAM

Catalogue #137



The Netherlands, 20th century

Donated by Sri Lal Perera, purchased in Colombo.

This machine-made bottle is included to illustrate differences (underlined). Olive-green glass with no bubbles. Sides sub-parallel. Mould seams run up opposite diagonal corners, over the shoulder and up the neck and lip. A circumferential seam is present below the lip. A seam left by a post bottom is present on the square base that has a central, domed depression.

The embossing, in the long axis of the bottle on three sides reads: J. van Felman (in fancy script) / SCHNAPPS / SCHIEDAM

Height 23.3 cm, shoulder width 7.4 cm, base width 7.25 cm.

BIBLIOGRAPHY

Beck, Doreen, 1973.*The Book of Bottle Collecting*, Hamlyn, London.

Fletcher, Edward, 1972.*Bottle Collecting: finding, collecting and displaying antique bottles*. Blandford Press, Poole.

Hedges, A.A.C., 1975.*Bottles and Bottle Collecting*, Shire Album 6, Shire Publications Ltd, Aylesbury.

Jones, Olive and Sullivan, Catherine, 1985.*The Parks Canada Glass Glossary: for the description of containers, tableware, flat glass and closures*. Studies in Archaeology, Architecture and History, National Historic Parks and Sites Branch, Parks Canada, Environment Canada.

Munsey, Cecil, undated. *The Illustrated Guide to Collecting Bottles*, Hawthorn Books, Inc., New York.

Robinson, Wendy S., 1981. *First Aid for Marine Finds*, Handbooks in Maritime Archaeology No. 2, National Maritime Museum, Trustees of the National Maritime Museum, UK.

Roycroft, Ross and Christine, 1977. *Australian Bottle Price Guide, Number Two*, Author publication.

Acknowledgements:

Books and photocopies donated by Ian Burgess, Jon Carpenter and Vallipuram Murali are acknowledged with grateful thanks.

MF 12.5.2020